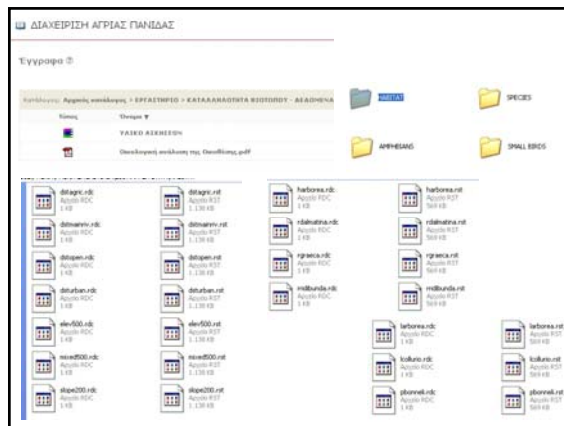
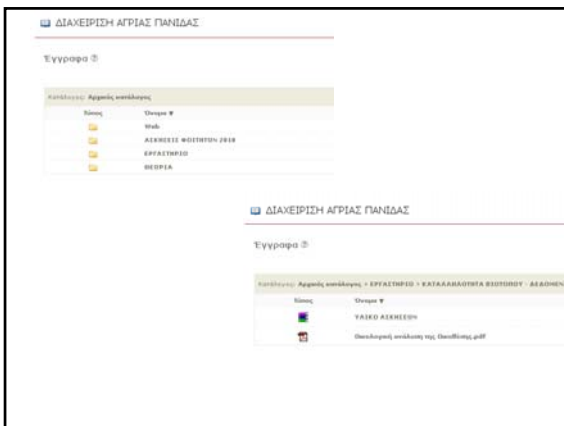
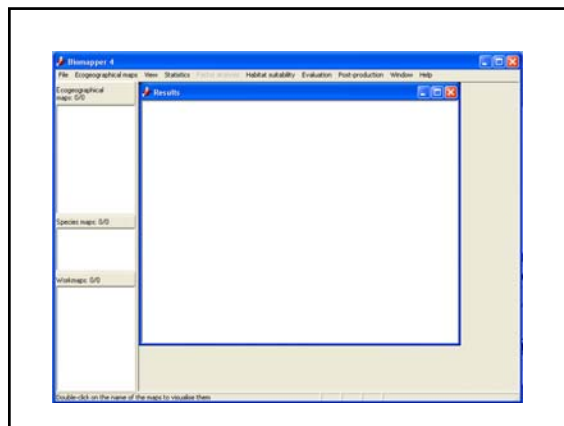
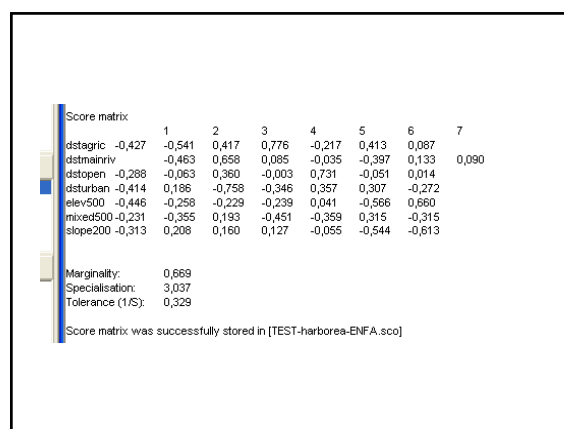
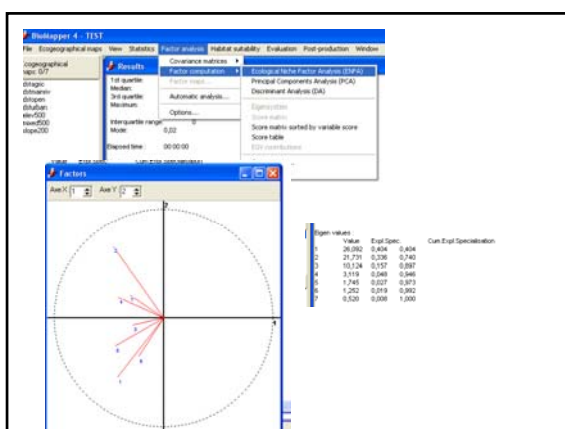
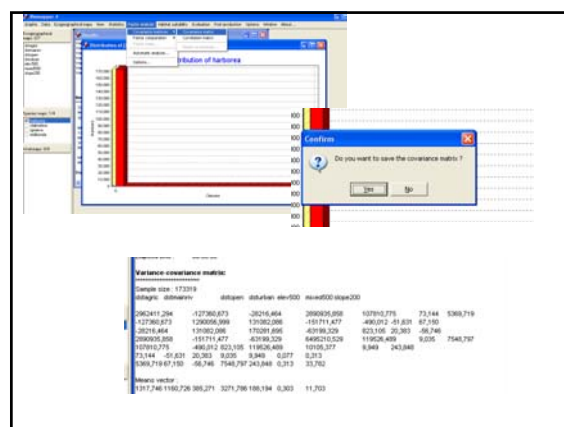
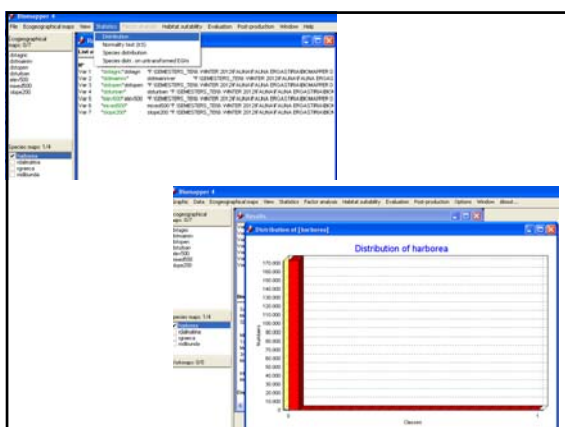
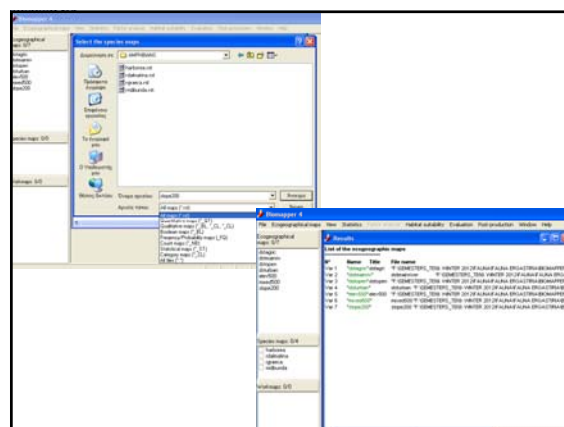
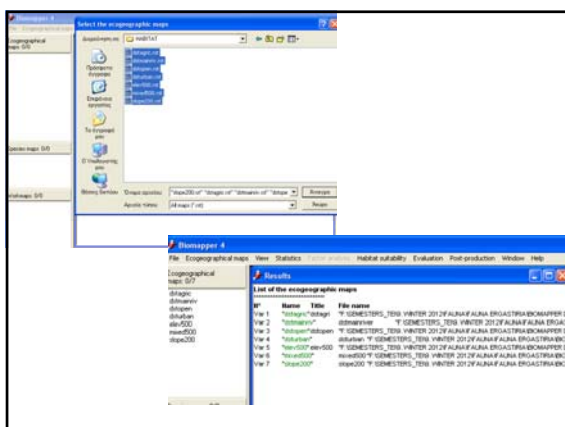


Biomapper

Οδηγός χρήσης του προγράμματος





Factor analysis: Habitat suitability - Evaluation - Post-production - Windows

Covariance matrices: Ecological Niche Factor Analysis (ENFA)
Principal Components Analysis (PCA)
Discriminant Analysis (DA)

Factor maps: Extrapolation

Options: Score matrix sorted by variable score
Score table
EIG contributions
Open scores...
Save scores...

Score matrix

Variables sorted by score

| Factor 1 (40%) | Factor 2 (24%) | Factor 3 (10%) | Factor 4 (5%) | Factor 5 (2%) | Factor 6 (2%) | Factor 7 (1%) |
|------------------|------------------|-------------------|------------------|------------------|------------------|------------------|
| distmariv(-0,45) | distmariv(0,66) | disturbanc(-0,76) | distagnc(0,78) | distopen(0,73) | elev500(-0,57) | elev500(0,66) |
| elev500(-0,45) | distagnc(0,24) | distagnc(0,42) | micro500(0,45) | distmariv(-0,40) | slope200(-0,54) | slope200(0,61) |
| distagnc(0,43) | micro500(-0,36) | distopen(0,36) | disturbanc(0,26) | micro500(-0,36) | distagnc(0,41) | micro500(-0,32) |
| disturbanc(0,41) | elev500(0,26) | elev500(-0,23) | elev500(0,24) | disturbanc(0,36) | micro500(0,31) | disturbanc(0,27) |
| slope200(-0,21) | slope200(0,21) | micro500(0,19) | slope200(0,15) | distagnc(-0,22) | disturbanc(0,31) | distmariv(0,09) |
| distopen(-0,20) | disturbanc(0,10) | distmariv(-0,03) | slope200(-0,03) | distmariv(0,13) | distagnc(0,09) | distagnc(0,09) |
| micro500(-0,22) | distopen(-0,06) | distmariv(0,06) | distopen(0,00) | elev500(0,04) | distopen(-0,05) | distopen(0,01) |

Factor analysis: Habitat suitability - Evaluation - Post-production - Windows

Covariance matrices: Ecological Niche Factor Analysis (ENFA)
Principal Components Analysis (PCA)
Discriminant Analysis (DA)

Factor maps: Extrapolation

Options: Score matrix sorted by variable score
Score table
EIG contributions
Open scores...
Save scores...

Score table

| | Factor 1 (40%) | Factor 2 (24%) | Factor 3 (10%) | Factor 4 (5%) | Factor 5 (2%) | Factor 6 (2%) | Factor 7 (1%) |
|------------|----------------|----------------|----------------|---------------|---------------|---------------|---------------|
| distagnc | **** | **** | ** | ** | * | * | * |
| distopen | **** | **** | * | **** | * | * | * |
| distopen | * | **** | 0 | **** | * | 0 | * |
| disturbanc | ** | **** | ** | **** | ** | ** | **** |
| elev500 | *** | ** | **** | **** | **** | **** | **** |
| micro500 | *** | ** | **** | **** | **** | **** | **** |
| slope200 | *** | ** | * | * | * | * | **** |

Factor Maps

Parameters: # of factor maps: 3
Current analysis: ENFA

Explained information: 0,404

| Factor maps | Weights |
|--------------------------|---------|
| TEST habitats ENFA-G1_ST | 1,404 |
| TEST habitats ENFA-G2_ST | 0,336 |
| TEST habitats ENFA-G3_ST | 0,157 |

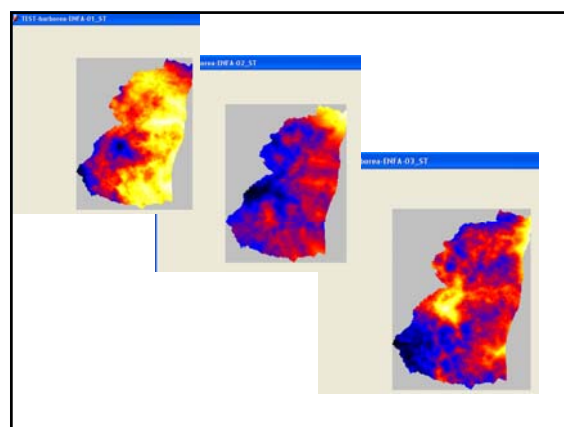
Factor map computation

Number of factors: 3
Explained information: 0,404
Extrapolation: 0,007

Factor 1 map → "TEST habitats ENFA-G1_ST" 12:00:00 ssp
Factor 2 map → "TEST habitats ENFA-G2_ST" 12:00:00 ssp
Factor 3 map → "TEST habitats ENFA-G3_ST" 12:00:00 ssp
Elapsed time: 12:00:00 ssp

Factor maps:

| Factor | Weight | Map |
|----------|--------|----------------------------|
| Factor 1 | 1,404 | "TEST habitats ENFA-G1_ST" |
| Factor 2 | 0,336 | "TEST habitats ENFA-G2_ST" |
| Factor 3 | 0,157 | "TEST habitats ENFA-G3_ST" |



Habitat Suitability map

Input maps: Factor maps (Factor 1, 2, 3)
Species map: Habitats

Output: Habitat Suitability map

Habitat Suitability map

Habitat suitability algorithm: Geometric mean

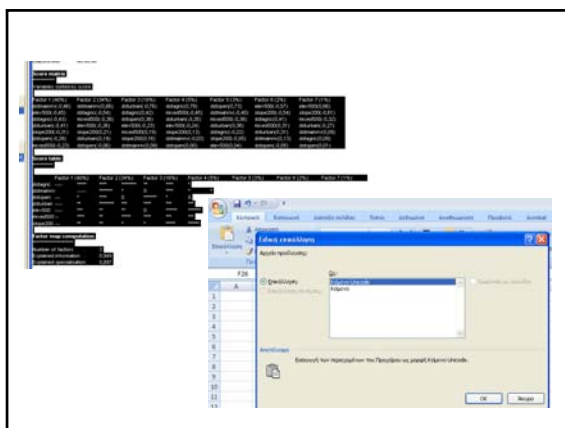
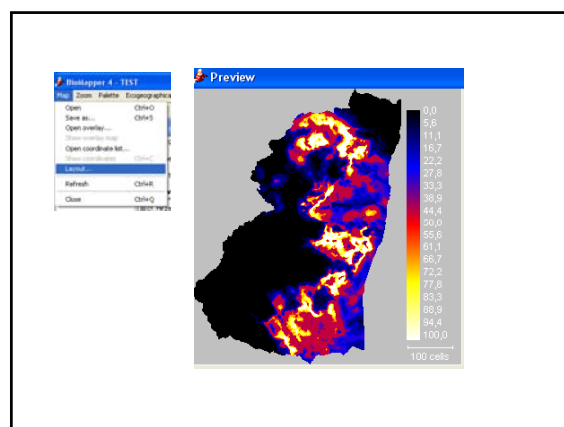
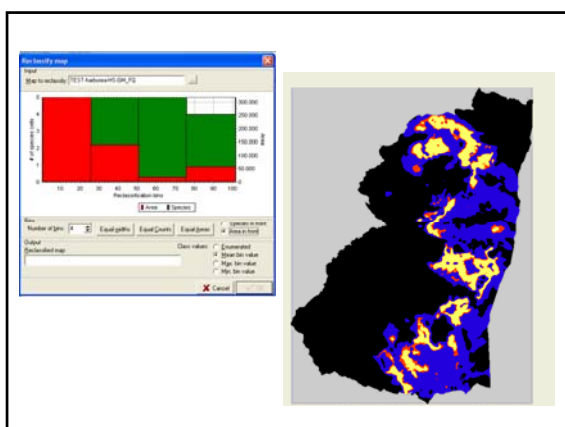
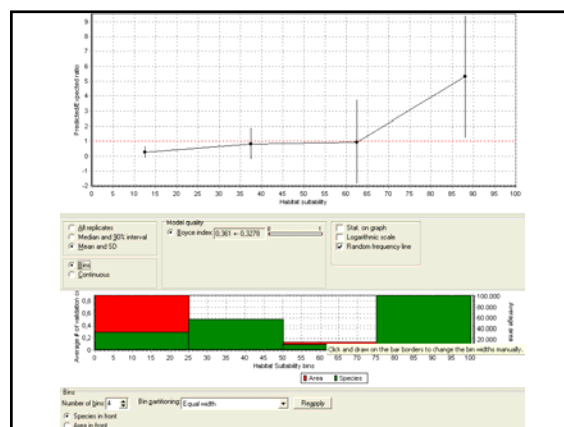
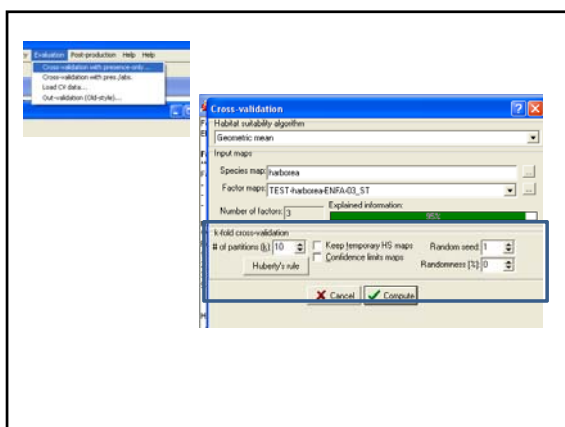
Input maps: Factor maps (Factor 1, 2, 3)

Species map: Habitats

Number of factors: 3

Output: Habitat Suitability map





| | A | B | C | D | E | F | G | H |
|----|---------------------------|------------------|------------------|-------------------|-------------------|------------------|------------------|---------------|
| 1 | Score matrix | | | | | | | |
| 2 | ***** | | | | | | | |
| 3 | Variables sorted by score | | | | | | | |
| 4 | Factor 1 (40%) | Factor 2 (34%) | Factor 3 (16%) | Factor 4 (5%) | Factor 5 (3%) | Factor 6 (2%) | Factor 7 (1%) | |
| 5 | distmainrv(-0,46) | distmainrv(0,64) | disturban(-0,76) | distagnr(0,78) | distopen(0,73) | elev500(-0,57) | elev500(0,64) | |
| 6 | elev500(-0,43) | distagnr(-0,34) | distagnr(0,42) | mixed500(-0,43) | distmainrv(-0,40) | slope200(-0,34) | slope200(0,61) | |
| 7 | distagnr(-0,41) | mixed500(-0,36) | distopen(0,36) | disturban(-0,33) | mixed500(-0,31) | distagnr(0,41) | mixed500(-0,32) | |
| 8 | disturban(-0,41) | elev500(-0,26) | elev500(-0,23) | elev500(-0,24) | disturban(0,36) | mixed500(0,31) | disturban(-0,27) | |
| 9 | slope200(-0,31) | slope200(0,21) | mixed500(0,13) | slope200(0,13) | distagnr(-0,22) | disturban(0,31) | distmainrv(0,09) | |
| 10 | distopen(-0,29) | disturban(0,15) | slope200(0,16) | distmainrv(-0,03) | slope200(-0,05) | distmainrv(0,13) | distagnr(0,09) | |
| 11 | mixed500(-0,23) | distopen(-0,06) | distmainrv(0,09) | distopen(0,00) | elev500(0,04) | distopen(-0,03) | distopen(0,01) | |
| 12 | Score table | | | | | | | |
| 13 | ***** | | | | | | | |
| 14 | | Factor 1 (40%) | Factor 2 (34%) | Factor 3 (16%) | Factor 4 (5%) | Factor 5 (3%) | Factor 6 (2%) | Factor 7 (1%) |
| 15 | distagnr | ---- | ***** | ---- | ----- | ** | ---- | * |
| 16 | distmainrv | ----- | ***** | * | ----- | ----- | ----- | * |
| 17 | distopen | ----- | * | ----- | ----- | 0 | ----- | * |
| 18 | disturban | ----- | ** | ----- | ---- | ----- | ----- | ---- |
| 19 | elev500 | ----- | ** | ----- | ---- | ----- | 0 | ----- |
| 20 | mixed500 | ----- | ** | ----- | ---- | ----- | ----- | ----- |
| 21 | slope200 | ----- | ** | ----- | * | ----- | ----- | ----- |
| 22 | Factor map computation | | | | | | | |
| 23 | ***** | | | | | | | |
| 24 | Number of factors | 3 | | | | | | |
| 25 | Explained information | 0,349 | | | | | | |
| 26 | Explained specialisation | 0,897 | | | | | | |